

PROGRAMMABLE FOR ANY TIRE SIZE



DataTrac® Pro Shown Actual Size

DataTrac® PRO



Program over
2500 specific
tire models and
sizes ensuring
customer gets
reliable mileage
information.

Always Have The Part Number

Stock only one part number with the programmable DataTrac® Pro and program the customer's specific requirement for any tire. With DataTrac® Pro you can also pre-set your own mileage and eliminate lead-time and pre-set charges.

Schedule Maintenance

The DataTrac® Pro is an indispensable tool for scheduling maintenance based on actual mileage rather than time.

Large, Easy-to-Read LCD Display

The display makes data retrieval simple and accurate. Optional flexibility of trip and life readings for precise data collection and management. Numbers automatically position upright for easy verification of mileage.

Compact Size

The compact size makes it easy to mount and dismount tires without removing the DataTrac® Pro from the wheel.

No Moving Parts

Provides improved reliability and durability for the most demanding vocational applications. Each unit is marked with a unique serial number providing additional security and data control.

Calibration and Installation

STEMCO calibrations are based at the mid-life of the tire tread (not the depth of new tire tread), one more reason we can guarantee +/-2% accuracy over the life of the tire. For proper calibration, all you need to know is the tire make, model and size. Refer to the chart for some of the most popular tires.

Hub caps and hub cap mounts and universal brackets are available for all popular makes and models. For quick and easy installation, use any of three different options: (1) aluminum hub cap with hubo window, (2) grilamid Hubodometer hub cap or (3) bracket.

Warranty

STEMCO DataTrac® Pro is warranted for 500,000 miles or four years, when installed in accordance with its specifications.

An Indispensable Tool for:

- Scheduling maintenance
- Determining lease charges
- Validating guarantees
- Calculating costs-per-mile

Product	Part No.
DataTrac® Pro	600-9999
Programmer	801-6000

Application Cross-Reference

Tire Make	Tire Model	Tire Size	STEMCO Mechanical Hubo Miles / KM	Veeder-root P/N miles / KM	DataTrac®Pro Miles/KM	*DataTrac®Pro REV - Mile/KM
Bridgestone	M726	11R22.5	650-0598/650-0537	777717-494/777727-306	600-5499/600-4310	499 / 310
Bridgestone	M726	11R24.5	650-0584/650-0528	777717-475/777727-294	600-5476/600-4296	476 / 296
Bridgestone	M726	255/70R22.5	650-0622/650-0549	777717-572/777727-350	600-5564/600-4351	564 / 351
Bridgestone	M726	285/75R24.5	650-0595/650-0537	777717-494/777727-306	600-5499/600-4310	499 / 310
Bridgestone	M726	295/75R22.5	650-0605/650-0541	777717-510/777727-316	600-5514/600-4320	514 / 320
Bridgestone	R194	11R22.5	650-0605/650-0541	777717-514/777727-316	600-5513/600-4319	513 / 319
Bridgestone	R194	11R24.5	650-0593/650-0534	777717-490/777727-306	600-5489/600-4304	489 / 304
Bridgestone	R194	255/70R22.5	650-0627/650-0552	777717-572/777727-359	600-5580/600-4361	580 / 361
Bridgestone	R194	285/75R24.5	650-0605/650-0541	777717-514/777727-316	600-5513/600-4319	513 / 319
Bridgestone	R194	295/75R22.5	650-0612/650-0545	777717-525/777727-326	600-5529/600-4328	529 / 328
GoodYear	G104	255/70R22.5	650-0627/650-0552	777717-572/777727-359	600-5579/600-4360	579 / 360
GoodYear	G124	11R22.5	650-0601/650-0537	777717-500/777727-310	600-5505/600-4314	505 / 314
GoodYear	G124	255/70R22.5	650-0626/650-0549	777717-572/777727-359	600-5572/600-4356	572 / 356
GoodYear	G167	11R22.5	650-0598/650-0537	777717-500/777727-310	600-5501/600-4311	501 / 311
GoodYear	G167	295/75R22.5	650-0605/650-0541	777717-514/777727-326	600-5515/600-4320	515 / 320
GoodYear	G314	11R22.5	650-0605/650-0541	777717-510/777727-312	600-5512/600-4318	512 / 318
GoodYear	G314	11R24.5	650-0593/650-0534	777717-484/777727-300	600-5488/600-4303	488 / 303
GoodYear	G314	285/75R24.5	650-0605/650-0541	777717-510/777727-316	600-5514/600-4320	514 / 320
GoodYear	G314	295/75R22.5	650-0613/650-0545	777717-520/777727-326	600-5529/600-4328	529 / 328
GoodYear	G362	11R24.5	650-0584/650-0528	777717-475/777727-300	600-5478/600-4297	478 / 297
GoodYear	G362	285/75R24.5	650-0598/650-0537	777717-500/777727-310	600-5501/600-4311	501 / 311
GoodYear	G362	295/75R22.5	650-0605/650-0541	777717-514/777727-326	600-5515/600-4320	515 / 320
GoodYear	G372	11R24.5	650-0584/650-0528	777717-475/777727-297	600-5476/600-4296	476 / 296
GoodYear	G372	285/75R24.5	650-0598/650-0537	777717-494/777727-310	600-5497/600-4309	497 / 309
GoodYear	G372	295/75R22.5	650-0605/650-0541	777717-510/777727-316	600-5512/600-4318	512 / 318
Michelin	XDA2	11R22.5	650-0598/650-0537	777717-500/777727-310	600-5502/600-4312	502 / 312
Michelin	XDA2	11R24.5	650-0587/650-0528	777717-475/777727-294	600-5480/600-4298	480 / 298
Michelin	XDA2	255/70R22.5	650-0625/650-0549	777717-572/777727-350	600-5566/600-4352	566 / 352
Michelin	XDA2	275/80R22.5	650-0605/650-0541	777717-510/777727-326	600-5519/600-4323	519 / 323
Michelin	XDA2	275/80R24.5	650-0598/650-0537	777717-500/777727-310	600-5502/600-4312	502 / 312
Michelin	XZA2	11R22.5	650-0601/650-0539	777717-510/777727-316	600-5510/600-4317	510 / 317
Michelin	XZA2	11R24.5	650-0591/650-0532	777717-484/777727-300	600-5485/600-4302	485 / 302
Michelin	XZA2	275/80R22.5	650-0610/650-0545	777717-520/777727-326	600-5526/600-4327	526 / 327
Michelin	XZA2	275/80R24.5	650-0601/650-0539	777717-510/777727-316	600-5509/600-4316	509 / 316
Michelin	XZE	255/70R22.5	650-0626/650-0549	777717-572/777727-359	600-5574/600-4357	574 / 357

RELIABLE MILEAGE INFORMATION WITH GUARANTEED ACCURACY



STEMCO's drive-less Hubodometer® offers road-proven accuracy backed by a 500,000 mile warranty.

An Indispensable Tool

The STEMCO Hubodometer® is an indispensable tool for scheduling maintenance, determining lease charges, validating guarantees, and calculating costs per mile.

Reliable Mileage Information

Hubodometers® are calibrated to perform on over 2,500 specific tire models and sizes to further ensure reliable mileage information.

Spring-loaded Counterweight

Virtually eliminates spin when tires hit bumps and potholes, your assurance of greater accuracy.

Preset Your Hubodometer®

STEMCO will preset your Hubodometer® with the mileage data you require for a nominal charge. Allow 3 days for shipping.

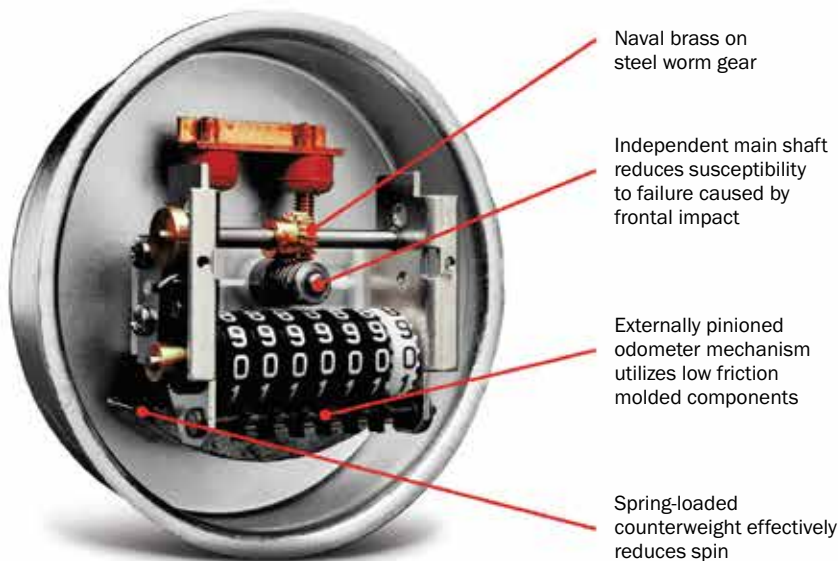
500,000 Mile Warranty

Guaranteed over-life-of-tire accuracy backed by 500,000 mile warranty.

Construction and Design

- **Main shaft is independent of front cover**, greatly reducing failure caused by frontal impact.
- **Unit is sealed for added durability** in a moisture-controlled environment of polycarbonate and steel.
- **Externally pinioned odometer mechanism** utilizes low-friction molded components. These features, plus nine permanently lubricated bronze bearings, eliminate wear and ensure long life.
- **Worm drive** rotates parts less frequently, reducing wear.
- **Rugged construction.** Naval brass on steel. No plastic drive components.

Superior Design Guarantees ±2% Accuracy



Calibration and Installation

To ensure accurate calibration, we've worked with the engineering staff of all major tire manufacturers. We have compiled fleet data on more than 2,500 tire models and sizes. In addition, STEMCO calibrations are based at the mid-life of tire tread (not the depth of new tire tread), one more reason we can guarantee ±2% accuracy over the life of the tire.

For proper calibration of any STEMCO Hubodometer®, all you need to know is tire make, model and size. With this information and our Tire Classification catalog (which includes radials and low-profile tires), you can quickly determine the part number for the correct Hubodometer®.

STEMCO offers a pre-set Hubodometer® program at a nominal cost. Pre-set orders are shipped within three working days from the Longview, Texas warehouse. For more information, contact STEMCO Customer Service.

Warranty

The STEMCO Hubodometer® is warranted for 500,000 miles when installed in accordance with its specifications. See your STEMCO distributor for details.

Hub Caps & Brackets

Hub caps, hub cap mounts and universal brackets are available for all popular makes and models. For quick and easy installation, use any of three different options: (1) aluminum hub cap with hubo window, (2) grilamid Hubodometer® hub cap or (3) bracket.



Aluminum Hub cap with Hubo Window



Grilamid Hubodometer® Hub Cap



Bracket Installation

Hubodometer® Specifications

Popular Hubodometers® (in order of popularity)



Part No.	RPM	Blank Tenths Part No.	Part No.	RPKM	Install Torque
650-0610	522	650-0611	650-0537	310	
650-0598	500	650-0600	650-0532	300	
650-0613	532	650-0614	650-0539	315	
650-0601	504	650-0602	650-0545	324	
650-0605	513	650-0606	650-0541	320	
650-0587	480	650-0588	650-0549	357	

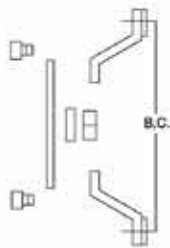
Hubodometer® Brackets



Style A



Style C



Universal Mount

Part No.	Bolt Circle	Stud Size	Height	Description	Style
6100001	5-1/4"	1/2"	1-11/16"		A
6100002	5-1/2"	5/8"	1-11/16"		A
6100003	6-3/8" - 6-1/2"	1/2" - 9/16"	1-11/16"		A
6100005	7-1/4"	9/16"	1-11/16"		A
6100006	7"	5/8"	1-11/16"		A
6100007	7"	3/4"	1-11/16"		A
6100008	7-1/2"	5/8"	1-9/16"		A
6100009	7-1/2"	5/8"	3-11/16"		A
6100010	8-5/8"	5/8"	5-7/16"	Mack Mount	A
6100011	5-1/2" - 7-1/2"	1/2"	1-3/4"	Universal Mount	
6100013	5-1/2"	7/16"	1/4"		A
6100014	7-5/8"	5/8"	4-3/8"		A
6100015	2-1/2" - 6-1/2"	9/16"	1-1/8"	Car Mount (5 Stud)	C
6100016	2-1/2" - 6-1/2"	5/16" - .343	1-1/8"	Universal Truck Mount (5 Stud)	C
6100017	5-7/32"	5/8"	1-11/16"		A
6100022	3-9/16"	1/2"	1/2"	Strap and Lock Assembly	
6100023	3-15/16"	1/2"	1"		A
6100024	5-1/2"	5/16" - 18 thd	4-1/2"	Hardware for Berg Cap	
6100025	4-1/2" - 9"	3/16"	1-11/16"	TMK-90 Truck Mount	
6100028	5-1/2"	5/16"	5"	Sentinel and PSI Caps - 4 Leg	
6100029	6-3/4"	5/16"	6"	Sentinel, PSI, AirGo Caps - 4 Leg	
6100032	7-1/4"	9/16"	1-1/2"		A
6100058	6-1/2"	1/2"	4-1/2"		A
6100059	4"	9/16"	1-1/2"	For Golf Carts	A
6100065	5-1/2"	5/16"	3-1/2"	Fits 4009 Hubcap	A
6100066	6-1/2"	5/8"	5-1/4"		A
6100079	7-1/4"	3/4"	1-11/16"		A
6100084	6-3/4"	5/16"	5"	Sentinel and PSI Caps - 4 Leg, f/4195	
6100090	N/A	N/A	N/A	Mounts on Top of Window Ring	
6100093	262 mm (10.31")	M10	N/A	Meritor Planetary Axle-DTrac Only	
6100094	246 mm (9.70")	M10	N/A	MAN Planetary Axle-DTrac Only	
6410023	N/A	N/A	N/A	Refurb Kit f/MAN Bracket	

Hubodometer® Hub Caps - For Trailer Installations



640-0001



640-0003

▣ Vented

Hub Cap Includes Gasket	Gasket Part No.	Bolt Circle Diameter	Number of Holes	Bolt Diameter	Aluminum Equivalent
640-0001 ▣	641-0005	5-1/2"	6	5/16"	347-4009
640-0002 ▣	641-0017	5-1/2"	5	5/16"	347-4013
640-0003 ▣	330-3077		6-1/4" x 8 UN(M)		347-4075